



Programs of Study

Program Options Locator

The following list gives the location in the catalog where specific programs begin.

Ministerial Ed Programs (begins page 68)

B.A.— Major in Ministerial Education	68
Pastoral Ministry Track	71
Pastoral Counseling Track	71
Urban Ministry Track	71
Youth Ministry Track	71
World Missions Track	72
Music Ministry Track	72
Education Track	72
A.A.— Major in Bible and Theology	72

Intercultural Studies and World Missions Programs (begins page 74)

B.A.— Major in Inter Studies & World Missions	74
A.A.— Major in Inter Studies & World Missions	76

Music Programs (begins page 77)

Common B.A. Music Core	79
B.A.— Major in Church Music	80
Performance Track	80
Non-Performance Track	82
B.A.— Major in Music Education	83
K-12 Performance Track	83
K-12 Non-Performance Track	84
K-8 Music Ed & Classroom Ed Track	86
A.A.— Major in Music Ministry	87

Teacher Ed Programs (begins page 89)

Common B.A. Teacher Ed Hours	89
B.A.— Major in Teacher Education	89
Elementary Education Track	90
Secondary English Ed Track	90
A.A.— Major in Elementary Education	91

General Studies Programs (begins page 93)

B.A.— Major in Church and Family Ministry	93
A.A.— Major in Business	97
General Business Track	98
Office Administration Track	98
A.A.— Major in General Studies	98



Curriculum Structure

The faculty has determined that all programs should have a common core of Bible and Theology and of General Education for both the two-year degrees (AA) and the four-year degrees (BA). Some programs specify what elective classes to take. For example, a program may require that the student take Principles of Sociology (SS 202) for three hours of his or her social science electives.

Also, a program may waive a particular core requirement in light of a more in-depth treatment of the topic in another course. For example, students in the Division of Intercultural Studies and World Missions do not have to take Doctrine and Practice of World Missions (Th 114) since they are required to take Theology of the Christian World Mission (Th 227).

The programs at GBSC comprise five components: Bible/theology, general education, professional studies, Christian service, and character development.

Bible/Theology Core

The Bible and theology component is designed to give the student a foundation of biblical content and theology for lifelong spiritual maturation. All students, therefore, major in Bible because within the scriptures we find our sole foundation for faith and practice. The Bible/Theology Core is thus required for every graduate.

When the Bible/Theology Core program has been completed, students should:

- ♦ Grasp the historical background and biblical content of both the Old and New Testaments,
- ♦ Interpret properly the biblical content, and
- ♦ Understand and build a solid theological base, especially in those areas that are distinctive to our conservative, Wesleyan-Arminian tradition.

Bible and Theology Core		AA	BA
Bi 103 OT Literature	3	3
Bi 104 NT Literature	2	2
Bi/Th Bible or Theology Electives	0	9
Th 112 Doct/Practice of Evangelism	1	1
Th 113 Doct/Practice Church Growth	1	1
Th 114 Doct/Practice World Missions	1	1
Th 115 Doct/Practice of Prayer	1	1
Th 140 Principles of Christian Life I	0	2
Th 141 Principles of Christian Life II	0	2
Th 201 Christian Beliefs	3	3
Th 202 Doctrine of Holiness	3	3
Th 441 Senior Worldview Seminar	0	2
	Total	15	30



General Education Core

The General Education Core at God's Bible School and College is intended to complement the Bible/Theology and Professional Studies components of all degree programs, providing a balanced introduction to liberal arts and life skills and enhancing the student's credibility in and impact on an increasingly educated society.

The college has established a fine arts requirement within General Education for all degree programs. The college will transfer other fine arts credits that are in keeping with the institution's mission. Students should see their advisors to establish which General Education elective courses will be most valuable to their ministry objectives.

The diversity requirement within General Education can be met by taking one of the following three courses: SS 202, SS 345 or SS 421.

General Education Core		AA	BA
Bu 115 Computer Apps I	0	1
Bu 116 Computer Apps II	0	1
Bu 117 Computer Apps III	0	1
En 101 English Composition I	3	3
En 102 English Composition II	3	3
En 201 Public Speaking	3	3
En Literature Electives	0	3
Ma/Sc Math or Science Electives	3	0
Ma Math Electives	0	3
Mu 103 Fine Arts Appreciation	2	2
Mu Music Electives	0	2
Ph 221 Introduction to Philosophy	3	3
Ps 101 General Psychology	3	3
Sc Science Electives	0	4
SS 121 Western Civilization	0	3
SS Social Science Electives	0	3
SS Diversity Electives	0	2
	General Education Electives	0	3
	Total	20	43



Professional Studies

The Professional Studies component of each program focuses on the professional skills required within each discipline. Through the professional studies courses, students are given the opportunity and may also be required to participate in areas of ministry related to their particular programs. Professional studies courses equip students to carry out the responsibilities and tasks specific to their chosen vocations.

Christian Service

Every program has a Christian Service component that requires each student to complete supervised practical assignments as a way of giving something back to the community and to the local church. Christian Service is coordinated by the Office of Christian Service, which correlates classroom learning with ministry opportunities.

Students are required to complete successfully a specified number of Christian Service credits in order to graduate. For more information, see “Christian Service Credits” on page 56, or request a copy of the *Christian Service Handbook* from the school.

Character Development

God’s Bible School and College is committed to helping students purposefully develop biblical Christian character. Each year students will complete a self-assessment and submit a completed copy to their divisional chairperson and resident director. Students will meet with staff to discuss their self-assessment and identify any areas of needed improvement. Students must show adequate progress in order to retain their student status. For more detail, see “Character Requirement” on page 28.

Cross-Curricular Concerns

As part of its commitment to providing students with a broad education, GBSC emphasizes six areas throughout the curriculum: writing, public speaking, critical thinking, worldview development, diversity, and use of technology. In some cases, these concerns are directly addressed in specific courses – such as English Composition, Public Speaking, and Senior Worldview Seminar. But beyond this, GBSC’s faculty include opportunities for development in these areas in various classes throughout a student’s course of study. In these classes, students will create portfolio artifacts demonstrating achievement and understanding in all six areas of cross-curricular concern.

Writing

The process of writing can help students to learn better. Writing probably helps the writer to understand the thoughts that otherwise would remain inaccessible and helps people to operate at a higher level of abstraction. Writing is integrally involved in our learning process and has its best application in disciplines where

students need to think through and learn to evaluate problems. When we ask our students to write, we are encouraging them to engage actively with the subject matter: to see patterns, connect ideas, and make meanings – in other words, to learn actively.

The second reason for emphasizing writing is the obvious one: practicing writing results in improved student writing. If writing is to become a natural and effective skill for students, they must be offered practice and instruction in a great variety of academic settings. They must learn to write for different readers and in many contexts. Many of the problems we see in students' writing result from students not having enough awareness of these different contexts or not having enough practice addressing them.

Writing Across the Curriculum (WAC). WAC is designed to ensure that GBSC students receive a skill and knowledge base in writing that is commensurate with a college education and that will allow them to succeed as members of a profession and as members of society. In addition to standard composition courses offered by English professors, students will be required to take writing-designated courses offered by professors from across the curriculum. These courses are primarily intended to broaden the students' writing experience, as well as to provide them "applied" writing



experiences, especially within their major area of study. Many courses at GBSC require writing in the form of reaction papers, essays or reports, critical analyses or arguments, and research papers.

The WAC Requirement. A student satisfies the WAC requirement by successfully completing En 101, En 102, and a minimum of three writing-designated courses. At least one of the three writing-designated courses must be at the upper division level (300/400), though two or even all three may be upper division courses. If deemed necessary, students who demonstrate deficiency in writing may be required to attend the Writing Lab.

Evaluating Writing. In order to simplify paper formatting for different classes, the GBSC faculty have selected the American Psychological Association's (APA) style as the required format for all written work. Students will be introduced to APA style in English Composition courses. All papers, regardless of the course, should be submitted in this style. Note that some faculty may not require all components (for instance, an abstract may not be required); students should be sure to ask instructors for clarification as needed. Some information concerning APA style may be found online at <http://www.apastyle.org/>.

In evaluating written work, faculty have chosen to use a standard grading rubric, the 6+1 Trait® system devised by the Northwest Regional Educational Laboratory (NWREL). (GBSC has secured permission from the NWREL to use this system.) As with the adoption of APA style, the common rubric has been chosen to assist students, who will become familiar with the rubric during the required English Composition courses. The rubric, along with additional information, is available on the NWREL assessment website, <http://www.nwrel.org/assessment>.



Writing Lab. GBSC operates a Writing Lab. The Lab provides peer consultations addressing all phases of the writing process (from “prewriting” activities, through drafting and revising, to editing), thus supporting students in developing and enhancing writing skills.

Public Speaking

A student’s education in speech communication must be built upon a sound foundation which begins with our introductory speech-communication class, Public Speaking. Once the foundation has been established, it becomes the job of the faculty at large to bring students to the point where they, at graduation, are competent communicators. Such competence will be demonstrated in various speech-communication activities, in both general education courses and in courses in the program major.

Faculty will create learning experiences in their identified courses that will give students the opportunities to develop further their oral-communication skill. Such courses are carefully screened to make sure they provide the requisite instruction, critiqued practice, and evaluated performance.

The faculty has three basic goals in this area:

- ◆ To help bring students to the point where, at graduation, they are competent in speaking;
- ◆ To introduce students to the disciplinary conventions governing the different kinds of speech-communication activities; and
- ◆ To enhance students’ learning of disciplinary course content through the use of carefully designed speech-communication activities.

Critical Thinking

To define critical thinking skills is to restate many of the traditional goals of higher education – that is, to provide a program of instruction that enables students to become independent learners, to be capable of exercising informed and balanced judgment, and to contribute as mature citizens in their society.

Critical thinking cannot be assumed or taken for granted. Being a person of good will and good heart, or even a person of high intelligence, does not automatically translate into intellectual quality in one’s thinking. Since GBSC desires that student learning be of high intellectual quality, faculty are charged with the responsibility of contextualizing critical thinking into all subject areas.



Worldview Development

Developing a Christian worldview is an integral part of the Bible-college classroom. Both faculty and students are continually participating in this task. A Christian worldview goes far beyond applying proof texts from the Bible to moral issues students might encounter after college. A Christian worldview is a way of looking at all of life through the spectacles of faith in God. If God truly is sovereign, then He rules literature, history, science, and social institutions. If Christians acknowledge God's sovereignty, then our work in any field will transform that discipline into a practice that better reflects God's will and God's glory.



Both academic excellence and a maturing Christian worldview take considerable effort and time to develop. Faculty are encouraged to model this in their own lives and, in so doing, to demonstrate to students that education and Christian development are lifelong processes that fulfill our calling to love God with our hearts and minds.

The college classroom affords an environment in which students can investi-

gate the hard issues of our modern society, acknowledging God and His biblical revelation, while at the same time offering an atmosphere that supports questions, dissent, doubt, and creativity.

Courses that specifically deal with the development of a Christian worldview are Introduction to Philosophy, which all students are required to take, and other courses, such as Apologetics or Philosophy of Christian Education. In addition to such courses, faculty will create learning experiences in their programs that will give the student the opportunity to develop further their personal Christian worldviews.

Bachelor's degree programs require students to take Senior Worldview Seminar as an interdisciplinary capstone course that allows students to grapple with various social problems and to articulate strategies for addressing them from a Christian-worldview perspective.

Diversity

We recognize the existence of age, gender, ethnic, religious, and cultural differences among all peoples and on all levels of society. As Christians operating from a biblical worldview, we approach the issues of acknowledgement, affirmation, accommodation, and approval of diversity guided by our commitment to the absolute authority of God's word and the Great Commission. Therefore we seek to fulfill our mission of preparing faithful servants to proclaim Jesus Christ and spread scriptural holiness throughout the world by teaching our students that:

- ◆ Every person has been created in the image of God and therefore has inherent value and dignity.
- ◆ God provided Christ as an atonement for all peoples and therefore all can be saved and transformed into Christlikeness through the power of God's grace.

- ♦ All differences must be evaluated in the light of Scripture. Diversity that is in harmony with Scripture is healthy and only such diversity should be approved and accommodated.
- ♦ We should demonstrate our love to others by:
 - affirming their God-given dignity and worth.
 - seeking to understand those who differ from us and learn how to relate to them.
 - treating them with the same sensitivity and concern as we would wish to be treated in reverse circumstances.
 - gently and kindly telling them the truth for the sake of their salvation, in spite of differing worldviews.

Given this commitment to diversity, the faculty has identified courses to include in the General Education Core to address diversity and additional courses within the curriculum that have assignments relating to diversity.



Use of Technology

GBSC strives to promote the most effective uses of technology to enhance learning. Technology is introduced into courses so that students extend their mastery of course material while acquiring technology skills and learning how to use these skills to solve problems. This curriculum helps prepare students for a lifetime of learning in our increasingly technological world.

Students enrolled in bachelor's degree programs are required to take a series of three courses in computers and information technology that are designed to enable students:

- ♦ to give effective presentations (MS PowerPoint);
- ♦ to manage schedules (MS Outlook);
- ♦ to utilize databases and spreadsheets (MS Access and MS Excel); and
- ♦ to develop a basic website design to construct a professional portfolio (MS FrontPage).

In addition to these courses, faculty will create learning experiences in their programs that will give students the opportunities to further utilize their technology skills.

Portfolio

All the divisions within the college have developed materials to guide the use of portfolios within their programs, based on the Berean portfolio model. Students will begin their portfolios in their first year of college. The portfolio will contain an evolving selection of a student's academic work as he or she progresses at GBSC. The portfolio will represent the student to those who review it for decision-making

purposes. The portfolio will be modified over the course of study so that it documents in a substantial and persuasive manner the student's growing ability to meet the challenges of his or her chosen profession.



Maintaining the portfolio is the responsibility of the student. Many of the materials which students choose to include at one point in time will be revised or replaced by more recent items as they approach their next portfolio reviews. It is up to the student to decide, in consultation with the advisor, what to keep and what to replace. A few older items in the portfolio may be helpful in illustrating important development in the student's thinking and/or abilities. At any given point, the portfolio's contents will reflect the student's current strengths and the areas where improvement is needed to meet the goals of the student's program.

At GBSC, the audience for the portfolio includes the student's advisor, with whom they will work closely in its development; the divisional faculty, who will collectively review the portfolio at specified points to make decisions and recommendations about understanding in major content area(s); and prospective employers with whom the student wishes to share the portfolio.

In addition to annual reviews by the student's advisor, the portfolio will be formally reviewed at least three times. Preparation to meet the requirements for these reviews should be made in consultation with the student's advisor.

All written items in the portfolio should be typed, using a word processor. The student should always keep backup copies of the items in the portfolio. All entries must be dated. Unless otherwise indicated, all items will be required for all reviews. Criteria to be used in reviewing portfolios will be made available to students. Students who need help in portfolio development may be required to take Portfolio Practicum (TE 390).

For a detailed look at specific content, students should contact their divisional office.

The Programs



Ministerial Programs

Division Mission Statement

The Division of Ministerial Education exists to glorify God and serve His church by providing Biblical training to equip laypeople, evangelists, and pastor-teachers to serve effectively as Christlike servant-leaders.

Division Objectives

The Division of Ministerial Education purposes to produce servant-leaders whose knowledge, values, and skills center in loving God, loving others, and loving learning. Such students will have:

- ♦ fostered a maturing relationship with Jesus Christ that is reflected in spiritual consistency and growing Christlikeness in character and conduct.

- ♦ gained a deepening appreciation and knowledge of Scripture, Theology, and Church History.
- ♦ developed the fundamental skills for Evangelism, Discipleship, Expository Preaching, Teaching, and Pastoral Ministry

Bachelor of Arts

Major in Ministerial Education

The program listed below leads to a bachelor of arts degree. This will be granted upon the completion of 44 hours of ministerial education, 49 hours of Bible and theology, and 43 hours of general education studies, making a total of 136 hours. In the course of completing this degree, students are introduced to the contents and research methodologies unique to the disciplines of biblical studies, systematic theology, church history, and pastoral theology.

This four-year degree program does not require a minor. However, the student must choose one of the seven following areas of professional focus: Pastoral Ministry, Pastoral Counseling, Youth Ministry, Urban Ministry, World Missions, Music Ministry, or Christian Education. This choice will affect the student's course requirements for the junior and senior years.

Please note, that because evangelism and church growth are covered in greater depth in other required classes, ministerial majors are not required to take Doctrine and Practice of Evangelism (Th 112) or Doctrine and Practice of Church Growth (Th 113).

Transfer students must successfully complete an examination before enrolling in Holiness: Critical Issues. Any student who does not successfully complete the examination will be required to take Doctrine of Holiness (Th 202) at God's Bible School and College.

All ministerial students are required to attend the plenary ministerial session on Fridays during fourth period. This session provides students opportunity to be mentored collectively, to benefit from spiritual accountability, and to hear special lectures by guest ministers and church leaders.

Upon completion of the course requirements in the Division of Ministerial Education, the student should give evidence of the following:

- ◆ Knowledge and love of the Holy Scriptures as the inspired, inerrant, and infallible Word of God, normative and absolute in its authority for all faith and practice;
- ◆ An understanding of our Christian heritage and history: its great figures, climactic moments, and timeless lessons;
- ◆ A grasp of the basic doctrines of classical Christian theology, as well as our unique Wesleyan emphases and contributions to its enrichment and development;
- ◆ Being filled with the Holy Spirit and demonstrating it by an abounding love for others, a zeal for reaching the lost, discipling new converts, and leading them into a life of holiness;
- ◆ A proficiency in the preparation and effective delivery of biblically-sound, homiletically-balanced sermons;
- ◆ Leadership skills in basic pastoral functions such as the conduct of public worship, administration of the sacraments, performance of weddings and funerals, oversight of the church's educational programs, and techniques of pastoral counseling.

Following are the specific course requirements for the *Bachelor of Arts with a Major in Ministerial Education*:

Bible and Theology

Old Testament

Bi 103 OT Literature	3
Bi 222 Wisdom Literature	3
Bi 241 Pentateuch	3
Bi 330 Daniel and Revelation	2
Bi OT Electives	2

New Testament

Bi 104 NT Literature	2
Bi 218 Life of Christ	3
Bi 340 Romans and Galatians	3
Bi NT Electives	4

Theology

Th 114 Doct/Practice World Missions	1
Th 115 Doct/Practice of Prayer	1
Th 140 Principles Christian Life I	2
Th 141 Principles Christian Life II	2
Th 201 Christian Beliefs	3
Th 202 Doctrine of Holiness	3
Th 226 Discipleship & Small Groups	2
Th 280 Hermeneutics	2
Th 301 Holiness: Critical Issues	2
Th 321 Systematic Theology I	3
Th 322 Systematic Theology II	3
Th 411 Senior Worldview Seminar	2
Bible/Theology Total		51





General Education

Bu 115 Computer Applications I	1
Bu 116 Computer Applications II	1
Bu 117 Computer Applications III	1
En 101 English Composition I	3
En 102 English Composition II	3
En 201 Public Speaking	3
En Literature Electives	3
Ma Math Electives	3
Mu 101 Fine Arts Appreciation	2
Mu Music Electives	2
Ph 221 Introduction to Philosophy	3
Ps 101 General Psychology	3
Sc Science Electives	4
SS 121 Western Civilization	3
SS Social Science Electives	3
SS Diversity Electives	2
GE General Education Electives	3
	General Education Total	43

Ministerial Education

The following courses are required for all ministerial majors, regardless of their area of ministry focus.

ME 105 Spiritual Formation	1
ME 106 Church Educational Program	1
ME 305 Conducting Sacred Ceremonies	1
ME 400 Introduction to Counseling	3
ME 405 Leadership & Meeting Management	1
Ph 324 Christian Ethics	2
Ph 425 Apologetics	3

Biblical Language

Gr 223 Greek Language IA	3
Gr 224 Greek Language IB	3
He 233 Hebrew Language IA	3
He 234 Hebrew Language IB	3

The student is required to have the current version of *BibleWorks* for each of the above Biblical Languages classes. A reduction in price is available for college students.

Church History & Religion

SS 321 Church History I	2
SS 322 Church History II	2
SS 204 Religions of America	2

Preaching

All ministerial students are required to have four semesters of preaching courses. These courses must be taken in sequential order:

ME 104 Introduction to Homiletics	3
ME 200 Advanced Homiletics	3
ME 206 Expository Preaching	3
ME 303 Preaching Holiness	3

Internship and Christian Service

Ministerial internships involve extensive pre-internship activity and a six-week apprenticeship under the supervision of an experienced pastor. This normally occurs between the junior and senior years.

ME 420 Ministerial Internship	2
	Christian Service Credits (7)	0

Ministerial Education Total 44

Ministry Tracks

In addition to the professional development courses listed above, one of the following ministry tracks must be chosen by all ministerial education majors upon entering their junior year. These tracks provide the student an opportunity to develop additional ministry skills in a specific area. The World Missions, Music Ministry, and Christian Education tracks were created in collaboration with the chairs of their respective divisions.

Pastoral Ministry Track

This track is the most general track and continues the professional development of the pastor as a preacher and minister.

ME 308 Christian Year & Worship	1
ME 404 Pastoral Teaching Practicum	2
ME/Bi/Th Approved Electives	5
	Track Hours	8



Pastoral Counseling

This track focuses on equipping the pastor with the skills needed to help his people change biblically and grow into greater Christlikeness.

ME 325 Basic Counseling Skills	3
ME 336 Problems in Counseling	3
ME 431 Crisis Counseling	1
ME Approved Counseling Elective	1
	Track Hours	8

Urban Ministry

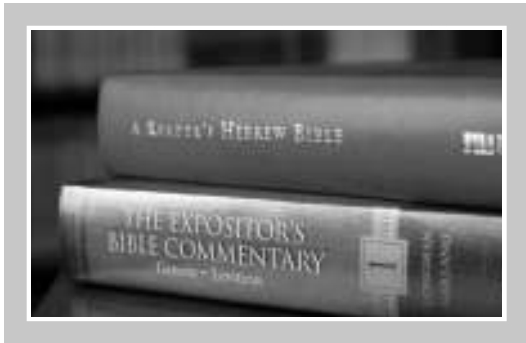
This track focuses on equipping the student to minister effectively within the urban context.

ME 341 Adv Evangelism & Discipling Skills	2
ME 441 Urban Church Planting	2
ME 442 Leadership in Urban Ministry...or....	
ME XXX Contemporary Urban Ministry	2
ME/Mi Ministerial/Missions Elective	2
	Track Hours	8

Youth Ministry

This track focuses on equipping the student to minister effectively to youth within the local church. Students will be required to attend the one-week Youth Ministry Seminar once in each of their junior and senior years.

ME 331 Introduction to Youth Ministry	2
ME 332 Current Youth Issues	2
ME 432 Youth Pastor and Program	2
Ps 224 Adolescent Psychology	2
	Track Hours	8



World Missions

This track focuses on equipping the pastor to understand the history, theology, and issues involved in world missions as well as understand the relationship of the local church to missions.

Mi 102 Historical Foundations of Missions 3
Mi 227 Theology of Christian World Missions 2
Mi 328 Principles/Problems of Missions 3
Track Hours	 8

Music Ministry

This track focuses on equipping the pastor with the core knowledge and skills necessary to provide pastoral guidance and oversight of a sound music ministry within a church.

Mu 131 Music of the Bible 3
Mu 133 Introduction to Music Philosophy 2
ME 385 Conducting Techniques I 3
Track Hours	 8

Education

This track focuses on providing the pastor basic skills relevant to understanding the issues involved in overseeing an educational program associated with a local church.

TE 101 Philosophy of Christian School Ed 2
TE 112 Principles and Methods of Ed 2
TE 435 Classroom Management 2
ME 404 Pastoral Teaching Practicum 2
Track Hours	 8

Program Summary

Bible and Theology 49
General Education 43
Ministerial Education Core *44
Professions Studies Track Specifics 8
Total Program Hours *144

*Some of the ministerial education courses required here may be taken as electives within general education, thereby reducing the total number of hours from 144 to 136.

Associate of Arts

Major in Bible/Theology

The program listed below leads to an associate of arts degree which shall be granted upon the completion of 36 hours of Bible and theology courses, 22 hours in general education, 2 hours of ministerial education, and 9 elective hours to complete a total of 69 hours.

This degree is designed for students who desire a sound biblical foundation upon which to build their life. It is ideal for the student who is not sure what God wishes for his/her life or for the student who is planning to transfer to another college to pursue studies in an area that God's Bible School and College does not offer.

Upon completion of this degree, a student should give evidence of the following:

- ◆ Knowledge and love of the Holy Scriptures as the inspired, inerrant, and infallible Word of God, normative and absolute in its authority for all faith and practice;
- ◆ Being filled with the Holy Spirit and demonstrating it by an abounding love for others, a zeal for reaching the lost, discipling new converts, and

- leading them into the experience of entire sanctification;
- ◆ Knowledge of how to worship God and the importance of prayer, fasting, praise, personal accountability, and faithful church attendance, and developing Christ-like character;
 - ◆ A basic grasp of the themes of each book of Scripture and an understanding of the background, structure, content, and spiritual message of the Bible as a whole; and
 - ◆ Knowledge of and the location of the best Bible verses that teach each of the basic doctrines of Christianity and the ability to share a doctrinal belief with others.

The following are the specific course requirements for the *Associate of Arts with a Major in Bible and Theology*:

Bible and Theology

Bible

Bi 103..... OT Literature	3
Bi 104..... NT Literature	2
Bi 218..... Life of Christ	3
Bi 222..... Wisdom Literature	3
Bi 241..... Pentateuch	3
Bi 330..... Romans and Galatians	3
Christian Service Credits (3)	0
Total	17

Theology

Th 114..... Doct/Practice World Missions	1
Th 115..... Doct/Practice of Prayer	1
Th 140..... Principles Christian Life I	2
Th 141..... Principles Christian Life II	2
Th 201..... Christian Beliefs	3
Th 202..... Doctrine of Holiness	3
Th 226..... Discipleship & Small Groups	2
Th 280..... Hermeneutics	2
Th 425..... Apologetics	3
Total	19

General Education

En 101..... English Composition I	3
En 102..... English Composition II	3
En 201..... Public Speaking	3
Ma/Sc..... Math or Science Electives	3
Mu 101..... Fine Arts Appreciation	2
Ph 221..... Introduction to Philosophy	3
Ps 101..... General Psychology	3
SS 204..... Religions of America	2
Total	22

Every *Associate of Arts with a Major in Bible and Theology* student must register for the following ministerial education courses. These courses must be taken in sequential order.

ME 105..... Spiritual Formation	1
ME 106..... Church Educational Program	1
Total	2



The student must also complete one of two tracks (nine hours) to complete the program. **Track I** is for those young men and women who do not have a definite call to ministry but are open to the possibility of God's calling them into some type of church-related ministry. This track provides a seamless transfer into the *Bachelor of Arts with a Major in Ministerial Education* at the completion of the *Associate of Arts with a Major in Bible and Theology*.

Those interested in the Pastoral Counseling Track should be aware that Introduction to Counseling (ME 204) is a prerequisite for all junior-level counseling courses.

Track II is provided for the student who is not yet sure what God wishes for his or her life or for the student who is planning to transfer to another college to pursue studies in an area God's Bible School and College does not offer.

Track I

ME 104	Introduction to Homiletics	3
ME 200	Advanced Homiletics	3
ME 206	Expository Preaching	3
Total		9

Track II

Any approved elective course	3
Any approved elective course	3
Any approved elective course	3
Total	9

Program Summary

Bible and Theology	36
General Education	22
Ministerial Education	2
Track I or II	9
Total Program Hours	69



Intercultural Studies & World Missions Programs

Division Mission Statement

The Division of Intercultural Studies and World Missions seeks to prepare missionary candidates spiritually, academically, and practically for contemporary cross-cultural ministry abroad and at home thus helping to fulfill the Great Commission.

Bachelor of Arts Major in Intercultural Studies and World Missions

This program leads to a bachelor of arts degree which shall be granted upon completion of 30 hours of professional studies, 43 hours of general education, 37 hours of biblical studies, and an 18-hour cognate to complete a total of 128 hours.

The cognate may be selected from one of the following areas: Nursing, Teacher Education, Preaching/Pastoral, Children's Ministry, Office Administration, and General Business. Other cognates may be selected if approved by the Divisional Chair. The cognate is intended to help the student develop skills that may be used on the mission field.

Upon completion of the requirements for this degree program, the student will be able to do the following:

- ◆ Articulate the biblical foundation for the Christian World Mission;
- ◆ Be inspired and instructed through the study of mission history from Pentecost to present;
- ◆ Demonstrate a knowledge of the major world religions and the uniqueness of the Christian faith;

- ◆ Communicate the Gospel effectively in a cross-cultural setting;
- ◆ Understand what skills are necessary to become an effective missionary;
- ◆ Develop at least one professional skill that can be used in missionary work.

The following are the specific course requirements for the *Bachelor of Arts with a Major in Intercultural Studies and World Missions*.

Bible and Theology

Bi 103 OT Literature	3
Bi 104 NT Literature	2
Bi 222 Wisdom Literature	3
Bi 340 Romans & Galatians	3
Bi/Th Bible or Theology Electives	8
Th 112 Doct/Practice of Evangelism	1
Th 113 Doct/Practice Church Growth	1
Th 115 Doct/Practice of Prayer	1
Th 140 Principles Christian Life I	2
Th 141 Principles Christian Life II	2
Th 201 Christian Beliefs	3
Th 202 Doctrine of Holiness	3
Th 425 Apologetics	3
Th 411 Senior Worldview Seminar	2
	Christian Service Credits (7)	0
Total		37



General Education

Bu 115 Computer Applications I	1
Bu 116 Computer Applications II	1
Bu 117 Computer Applications III	1
En 101 English Composition I	3
En 102 English Composition II	3
En 201 Public Speaking	3
En Literature Electives	3
Ma Math Electives	3
Mu 101 Fine Arts Appreciation	2
Mu Music Electives	2
Ph 221 Introduction to Philosophy	3
Ps 101 General Psychology	3
Sc Science Electives	4
SS 101 Western Civilization	3
SS Social Science Electives	3
SS Diversity Electives	2
	General Education Electives	3
Total		43

Professional Studies

Mi 001 ISWM Organization	0
Mi 102 Hist Foundation of Missions	3
Mi 227 Theology Chr World Mission	2
Mi 322 Current Issues/Methods Missions	2
Mi 327 World Religions	3
Mi 328 Principles/Prob Missionary Life	3
Mi 421 Cultural Diversity	3
Mi 424 Cross-Cultural Communication	2
Mi 432 Mission Internship	2
Mi 436 Senior ISWM Seminar	1
	Approved Professional Electives	9
Total		30

Cognate

Cognate Approved Classes	18
---------	------------------------	----

Program Summary

Bible and Theology	37
General Education	43
Intercultural Studies & World Missions	30
Cognate	18
Total Program Hours	128

For students intending on completing a Nursing Cognate in the BA degree, please note that the Christ Hospital School of

Nursing requires several classes that are not offered at God's Bible School and College. It is not necessary to take them before entrance into the nursing program, but it would be to the student's advantage. Therefore, it is suggested that such classes as Anatomy and Physiology be taken as summer classes at Cincinnati State College and transferred into the program as part of the required elective hours in the areas of math, science, and general education.



Associate of Arts Major in Intercultural Studies and World Missions

This program is for laypeople who may be interested in short-term missionary work or in working with missionary organizations.

Upon completion of the requirements for this degree program, the student will be able to do the following:

- ◆ Articulate the biblical foundation for the Christian World Mission;
- ◆ Be inspired and instructed through the study of mission history from Pentecost to present;

- ◆ Demonstrate a knowledge of the major world religions and the uniqueness of the Christian faith;
- ◆ Communicate the Gospel effectively in a cross-cultural setting;
- ◆ Understand what skills are necessary to become an effective missionary.

The following are the specific course requirements for the *Associate of Arts with a Major in Intercultural Studies and World Missions*:

Bible and Theology

Bi 103 OT Literature	3
Bi 104 NT Literature	2
Bi/Th Bible or Theology Electives	9
Th 112 Doct/Practice of Evangelism	1
Th 113 Doct/Practice Church Growth	1
Th 115 Doct/Practice of Prayer	1
Th 201 Christian Beliefs	3
Th 202 Doctrine of Holiness	3
	Christian Service Credits (3)	0
Total	23

General Education

En 101 English Composition I	3
En 102 English Composition II	3
En 201 Public Speaking	3
Ma/Sc Math or Science Electives	3
Mu Music Electives	2
Ph 221 Introduction to Philosophy	3
Ps 101 General Psychology	3
SS Social Science Electives	3
Total	23

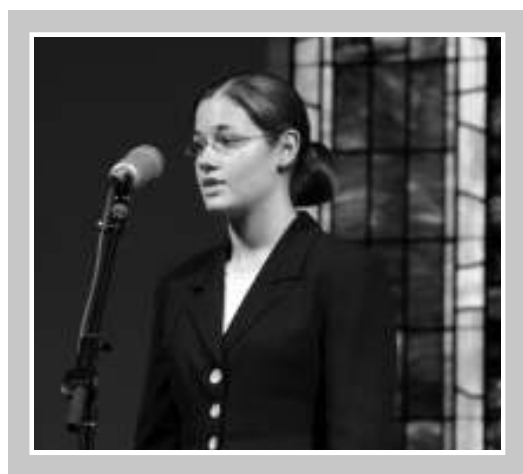
Professional Studies

Mi 001 ISWM Organization	0
Mi 102 Hist Foundation of Missions	3
Mi 241 Cultural Diversity	3
Mi 227 Theology Christian World Mission	2
Mi 327 World Religions	3
Mi 328 Principles/Prob Mission Life	3
	Approved Professional Electives	4
Total	18
Total Program Hours	64

Music Programs

Division Mission Statement

The purpose of the Division of Music is to prepare students for Christian service through the ministry of music. The courses are designed to provide each student the opportunity to study the basic principles of music, and develop a biblically-sound philosophy of music ministry.



Upon successful completion of any of the degree programs listed below, the student will be able to demonstrate:

- ◆ The ability to enter a ministry in church music, music evangelism, or Christian music education;
- ◆ A working knowledge of biblical concepts concerning music;
- ◆ A practical knowledge of music ministry;
- ◆ An understanding of fundamental music concepts;
- ◆ The basic skills necessary for reading and writing music;
- ◆ Skills in vocal and/or instrumental expression; and
- ◆ An understanding of multicultural music within a biblical worldview.

Entrance and Proficiency Requirements, and Transfer Student Regulations

This information is a summary of regulations that apply to incoming music majors. More specific explanations of these and other policies required of all music majors may be found in *A Guide for Music Majors*. A copy may be secured from the Division of Music office.

Required Music Organization Sequence

Students who have not completed the required music organization sequence must enroll in a music organization to be eligible to enroll in applied music. Any student who withdraws or is dropped from the music organization will also be dropped from applied music. Students who do not qualify for enrollment in a music organization may substitute courses at the discretion of the Division of Music chairperson. Students who do qualify will not be allowed to substitute any courses for a music organization.

Transfer of Music Organization Credit

Students may transfer one-half hour each semester (for a total of two semesters) of music organization from another college toward this three-hour sequence.

Music Theory Placement Exam

Entering music students will be placed in the appropriate level of Music Theory based upon their performance on the Music Theory Placement Exam. For students wishing to transfer credit from a non-accredited institution, credit by exam may be awarded for Mu 101, Mu 102, Mu 111,

Mu 112, Mu 211, and Mu 212, at the student's request, if the score for the corresponding sections of the exam are B- or higher. In this case, the grade earned on the corresponding section of the exam will be the grade earned for the class and will count in the calculation of the student's GPA. More complete information is available in *A Guide for Music Majors*.

Areas of Applied Study

All music majors choose two instruments for applied study during their degree program. Students may study piano, organ, wind instruments, string instruments, or voice. Degree candidates must elect to study piano or organ as one of their instruments unless they pass the piano proficiency examination (see Form 17 in *A Guide for Music Majors*).

Placement in Applied Music

Before the first semester of study, a faculty member auditions the student, then places the student on a suggested level in the applied study curriculum. Entrance requirements for each area of applied study are listed in *A Guide for Music Majors* under the Curriculum Spiral Sequence. This level is tentative until the student has completed a semester of study. The first jury (final exam for Piano Lab and Voice Class) establishes the level.

Admission to a Degree Program

To be admitted to a particular degree program, a music major must audition at the beginning applied music level required for that program. If these requirements are not met, the student must enroll in another program with appropriate levels. When the deficiencies have been removed, the student may then select a more advanced degree program.



Performance Track Study

For admittance to a performance track, candidates must qualify for at least applied music Mu 161 (major instrument, performance) in one instrument, and applied music Mu 151 (secondary instrument, non-performance) in another. Students will not be admitted to a performance track music degree program until they meet this requirement.

Non-Performance Track Study

For admittance to a non-performance degree track, Music Ed K-12 candidates must qualify for at least applied music Mu 151 (secondary instrument, non-performance) in one instrument, and applied music Mu 141 (introductory instrument) in another, in order to begin their instrumental study sequence. Students will not be officially admitted to a non-performance track music degree program until they meet this requirement.

For admittance to the non-performance track degree, Music Education and Classroom Education K-8 candidates, and Music Ministry candidates must qualify for at least applied music Mu 141 on two instruments.

Sophomore Qualifying Exam

All students who are on the performance track must successfully complete a sophomore qualifying examination before enrolling in Mu 361. Students are advised that a passing grade in Mu 262 does not necessarily qualify one to enroll in upper-division performance credit. Students who do not qualify, but still wish to do a senior recital will enroll in Mu 262 until successful completion of the sophomore qualifying examination.

Music Majors (BA)

The Division of Music offers the Bachelor of Arts Degree with a major in Church Music. Those who wish to prepare for a music ministry may choose one of the following two tracks:

- ♦ Church Music – Performance
- ♦ Church Music – Non-performance

The Division of Music also offers the Bachelor of Arts Degree with three different Music Education Tracks. Those majoring in Music Education must choose one of the following three tracks:

- ♦ K-12 – Performance
- ♦ K-12 – Non-performance
- ♦ K-8 Music and Classroom Education – Non-performance



Common Music Core

All bachelor of arts music majors must take the following courses:

Bible and Theology

Bi 103 OT Literature	3
Bi 104 NT Literature	2
Bi 131 Music of the Bible	3
Bi/Th Bible or Theology Electives	6
Th 112 Doct/Practice of Evangelism	1
Th 113 Doct/Practice Church Growth	1
Th 114 Doct/Practice World Missions	1
Th 115 Doct/Practice of Prayer	1
Th 140 Principles Christian Life I	2
Th 141 Principles Christian Life II	2
Th 201 Christian Beliefs	3
Th 202 Doctrine of Holiness	3
Th 411 Senior Worldview Seminar	2
	Christian Service Credits (7)	0
Total	30

General Education

Bu 115 Computer Applications I	1
Bu 116 Computer Applications II	1
Bu 117 Computer Applications III	1
En 101 English Composition I	3
En 102 English Composition II	3
En 201 Public Speaking	3
En Literature Electives	3
Ma Math Electives	3
Mu 101 Fine Arts Appreciation	2
Mu Music Electives	2
Ph Intro to Philosophy	3
Ps 101 General Psychology	3
Sc Science Electives	4
SS 121 Western Civilization	3
SS Social Science Electives	3
SS Diversity Electives	2
	General Education Electives	3
Total	43

Professional Studies

Mu 101 Intro Music Fundamentals ¹ (2) 0
Mu 102 Basic Music Theory ¹ (3) 0
Mu 111 Music Theory I ² 3
Mu 112 Music Theory II 3
Mu 211 Music Theory III 3
Mu 212 Music Theory IV 3
Mu 113 Ear Training I 1
Mu 213 Ear Training II 1
Mu 114 Sight Singing/Keyboard Skills I 1
Mu 214 Sight Singing/Keyboard Skills II 1
Mu 221 Music History/Lit I 2
Mu 222 Music History/Lit II 2
Mu 321 Music History/Lit III 2
Mu 322 Music History/Lit IV 2
Mu 133 Intro to Philosophy of Music 2
Mu 381 Elementary Music Methods ³ 2
Mu 383 Junior High Music Methods ³ 1
Mu 384 Music Technology 1
Mu 387 Percussion Techniques 1
Mu 388 Brass Techniques 1
Mu 482 Woodwind Techniques 1
Mu 483 String Techniques 1
Mu 385 Conducting Techniques I ³ 2
Mu 386 Conducting Techniques II ³ 2
Mu 183 Applied Diction ⁴or...	
Mu 485 Piano Pedagogy ⁴or...	
Mu 486 String Pedagogy ⁴ 2
Mu 135 Foundations of Music Ministry 2
Mu 231 Hymnology 2
Mu Music Org Sequence ⁵ 3
Mu 170 MSO Rec/Lec Attend (8+sem) 0
Mu 181/2 Accompanying ⁶ 0
Mu 281/2 Accompanying ⁶ 0
Mu 497 Senior Music Seminar 1
Total	48

¹ Mu 101 and 102 are deficiency courses which must be taken by all Bachelor of Arts candidates who do not successfully pass the theory entrance examination. Credit may be granted by passing the matriculation tests.



- ² Students must pass the Introduction to Music Fundamentals and the Basic Music Theory Matriculation tests to enter Mu 111.
- ³ Observation required in this course.
- ⁴ Students whose first concentration is piano enroll in Mu 485; voice, in Mu 183; strings, in Mu 486; and others enroll in any of the three courses.
- ⁵ Students are required a six-semester sequence in the same traveling organization.
- ⁶ For students whose principle instrument is piano or organ and are enrolled in Mu 351 or above.

Church Music Performance Track

The program listed below leads to a bachelor of arts degree which shall be granted upon completion of 48 hours of professional core courses, 30 hours in track specific professional studies, 43 hours of general education, and 30 hours of Bible and theology to complete a total of 151 hours. This five-year program does not require a minor. It is designed for the student who plans to enter a graduate program in church music. *It does not prepare the candidate to teach music in a Christian school.*

After completing this degree program, the student will:

- ◆ Have accomplished an advanced level of music proficiency in an applied performance concentration and be prepared to teach that instrument in the context of a church music ministry;
- ◆ Have developed a sound scriptural and philosophical basis for music in the church;
- ◆ Have developed a professional portfolio; and
- ◆ Be able to either enter a church music ministry or to pursue graduate-level studies in music.

Students must maintain a grade point average of at least 2.0 for the entire program and a 2.5 in Church music courses. Before students enroll in Supervised Church Music Ministry (Mu 431), they must meet all the requirements listed under the heading “Supervised Church Music Ministry” on page 82.



This bachelor of arts program is a professional church music program, and its candidates will graduate with the pink tassel, which represents music.

The following are the specific course requirements for the *Bachelor of Arts in Church Music: Performance Track*.

Professional Studies: Track Specific

Mu 136 Techniques of Music Ministry	2
Mu 481 Choral Methods ¹	2
Mu 331 Directed Study in Church Music	2
Mu 432 Supervised Church Music Min ²	5
Mu 491 Choral Conducting Practicum ¹	½
Mu 492 Instr Conducting Practicum ¹	½
Mu 151 Secondary Instrument ³	1
Mu 152 Secondary Instrument	1
Mu 251 Secondary Instrument	1
Mu 252 Secondary Instrument	1
Mu 161 Major Instrument ³	1
Mu 162 Major Instrument	1
Mu 261 Major Instrument	1
Mu 262 Major Instrument	1
Mu 361 Major Instrument	2
Mu 362 Major Instrument	2
Mu 461 Major Instrument	2
Mu 462 Major Instrument	2
Mu 370 Junior Recital (0 or ½ hr)	0
Mu 470 Senior Recital (0 or ½ hr)	0
	Track Total	28

Bible & Theology	30
General Education	43
Professional Core	48
Track Specific	28
Total Program Hours	149

- ¹ Observation required in this course.
- ² See Supervised Church Music Ministry Requirements.
- ³ One of the applied concentrations must be in piano unless the student has passed the piano proficiency test.



Supervised Church Music Ministry

As mentioned previously, students in the performance track of Church Music are required to take Supervised Church Music Ministry (Mu 431) – a practicum in Church Music. Music ministry, under the guidance of the Division of Music, a music supervisor, and a cooperating local minister of music, is the climax of this program.

To be eligible for a church music ministry assignment, the candidate must do the following:

- ◆ Successfully complete all academic courses except courses designated as the first half of the supervised church music ministry semester;
- ◆ Remove all unsatisfactory grades from his/her record (“D” in Church Music courses, or any “F”s or “I”s);
- ◆ Be in good standing, free from academic, disciplinary, and musical probation (see *A Guide for Music Majors*);
- ◆ Achieve and maintain the following grade point averages:
 - 2.5 in Church Music courses
 - 2.0 overall GPA;

- ◆ Present to the Division of Music at least three letters from different God’s Bible School and College music faculty that demonstrate that the student has exhibited the spiritual, musical and social qualities necessary to succeed as Minister of Music; and
- ◆ Complete the three phases of student music ministry candidate screening by the Music Ministry Committee successfully.

Church Music Non-Performance Track

The program listed below leads to a bachelor of arts degree which shall be granted upon completion of 48 hours of professional core courses, 18 hours in track specific professional studies, 43 hours of general education, and 30 hours of Bible and theology to complete a total of 139 hours. This four-year program does not require a minor. This terminal program is designed to prepare the candidate to go directly into a music ministry. *It does not prepare the candidate to teach music in a Christian school or to enter a graduate program in music.*

After completing this degree program, the student will:

- ◆ Demonstrate a basic level of music proficiency in non-performance applied concentration and teach that instrument in the context of a church music ministry;
- ◆ Give evidence of a sound scriptural and philosophical basis for music ministry;
- ◆ Have developed a professional portfolio; and
- ◆ Give evidence of a working knowledge of a music ministry.

Students must maintain a grade point average of at least 2.0 for the entire program and a 2.5 in Church music courses.

This bachelor of arts program is a music ministry program, and its candidates will graduate with the pink tassel, which represents music.

The following are the specific course requirements for the *Bachelor of Arts in Church Music: Music Ministry Non-Performance Track*.

Professional Studies: Track Specific

Mu 136	Techniques of Music Ministry	2
Mu 481	Choral Methods ¹	2
Mu 141	Introductory Instrument ²	1
Mu 142	Introductory Instrument ²	1
Mu 241	Introductory Instrument ²	1
Mu 242	Introductory Instrument ²	1
Mu 341	Introductory Instrument ³	1
Mu 342	Introductory Instrument ³	1
Mu 343	Gospel Piano or Voice ³	1
Mu 344	Gospel Piano or Voice ³	1
Mu 431	Church Music Practicum	2
	Track Total	14

Bible & Theology	30
General Education	43
Professional Core	48
Track Specific	14
Total Program Hours	135

- ¹ Observation required in this course.
- ² One of the applied concentrations must be in piano unless the student has passed the piano proficiency test.
- ³ Music Majors whose first concentration is piano may add either piano lessons or piano lab.



Music Education

Music Education K-12 - Performance Track

The program listed below leads to a Bachelor of Arts degree, which shall be granted upon the completion of 48 hours in professional core studies, 30 hours in track specific professional studies, 43 hours in general education, and 30 hours in Bible and theology to complete a total of 151 hours. This pre-graduate program is a five-year sequence and does not require a minor. It is designed for students who plan to enter a graduate program in music.

After completing this degree program, the student will:

- ◆ Demonstrate the ability to teach music in grades K-12 in the Christian school;
- ◆ Have accomplished an advanced level of music proficiency in an applied performance concentration and be prepared to teach that instrument in the Christian school;
- ◆ Have developed a sound scriptural and philosophical basis for music in the Christian school;
- ◆ Have developed a professional portfolio; and
- ◆ Be prepared for graduate level study in music.

Students who successfully complete the above program will be eligible to apply for ACSI Christian school music teacher certification (K-12).

Students must maintain a grade point average of at least 2.0 for the entire program and a 2.5 in music education courses. Before students enroll in Supervised Student Teaching (Mu 498), they must meet all the requirements listed under the heading “Supervised Teaching in Music Ed” found on page 87.

This degree is a professional music education program, and its candidates will graduate with the pink tassel, which represents music.

The following are the track specific course requirements for the *Bachelor of Arts Degree with a Major in Music Education: K-12 – Performance Track*.

Professional Studies: Track Specific

Mu 151 Secondary Instrument ¹ 1
Mu 152 Secondary Instrument 1
Mu 161 Major Instrument ¹ 1
Mu 162 Major Instrument 1
Mu 251 Secondary Instrument 1
Mu 252 Secondary Instrument 1
Mu 261 Major Instrument 1
Mu 262 Major Instrument 1
Mu 268 Intro to Music Education 2
Mu 361 Major Instrument 2
Mu 362 Major Instrument 2
Mu 370 Junior Recital (0 or ½ hr) 0
Mu 461 Major Instrument 2
Mu 462 Major Instrument 2
Mu 470 Senior Recital (0 or ½ hr) 0
Mu 481 Choral Methods ² 2
Mu 491 Choral Conducting Practicum ½
Mu 492 Instr. Conducting Practicum ½
Mu 496 Secondary Music Methods ² 1
Mu 498 Student Teaching (K-12 music) ³ 8
Track Total	 30

Bible & Theology 30
General Education 43
Professional Core 48
Track Specific 30
Total Program Hours 151

- ¹ One of the applied concentrations must be in piano unless the student has passed the piano proficiency test.
- ² Observation required in this course.
- ³ See the Supervised Student Teaching in Music requirements on page 87.



Music Education
K-12 – Non-Performance
Track

The program listed below leads to a bachelor of arts degree which shall be granted upon completion of 48 hours in professional core studies, 26 hours in track specific professional studies, 43 hours in general education, and 30 hours in Bible and theology to complete a total of 147 hours. This terminal program is a five-year sequence and does not require a minor. It is designed for the student who plans to go directly into teaching in a Christian school.

After completing this degree program, the student will:

- ◆ Demonstrate the ability to teach music in grades K-12 in the Christian school;
- ◆ Have accomplished an intermediate level of music proficiency in a secondary non-performance applied concentration and be prepared to teach that instrument in the Christian school;
- ◆ Have developed a sound scriptural and philosophical basis for music in the Christian school; and
- ◆ Have developed a professional portfolio.

Students who successfully complete this program will be eligible to apply for ACSI Christian school music teacher certification (K-12).

Students must maintain a grade point average of at least 2.0 for the entire program and a 2.5 in music education courses. Before students enroll in Supervised Student Teaching (Mu 498), they must meet all the requirements listed under the heading “Supervised Teaching in Music Ed” found on page 87.



This degree is a professional Christian music education program, and its candidates will graduate with the pink tassel, which represents music.

The following are the specific course requirements for the *Bachelor of Arts Degree in Christian School Music Education: K-12 – Non-performance Track*.

Professional Studies: Track Specific

Mu 141 Introductory Instrument ¹ 1
Mu 142 Introductory Instrument 1
Mu 241 Introductory Instrument 1
Mu 242 Introductory Instrument 1
Mu 252 Secondary Instrument 1
Mu 151 Secondary Instrument ¹ 1
Mu 152 Secondary Instrument 1
Mu 268 Intro to Music Education 2
Mu 252 Secondary Instrument 1
Mu 351 Secondary Instrument 1
Mu 352 Secondary Instrument 1
Mu 451 Secondary Instrument 1
Mu 452 Secondary Instrument 1
Mu 370 Junior Recital (0, ½, or 1 hr) 0
Mu 481 Choral Methods ² 2
Mu 491 Choral Conducting Practicum ² ½
Mu 492 Instr. Conducting Practicum ² ½
Mu 496 Secondary Music Methods ² 1
Mu 498 Student Teaching (K-12) ³ 8
Track Total	 26

Bible & Theology 30
General Education 43
Professional Core 48
Track Specific 26
Total Program Hours 147

¹ One of the applied concentrations must be in piano unless the student has passed the piano proficiency test.

² Observation required in this course.

³ See the Supervised Student Teaching in Music requirements on page 87.

Music Education K-8 Music and Classroom Ed – Non-Performance Track

The program listed below leads to a bachelor of arts degree which shall be granted upon completion of 48 hours in professional core studies, 30 hours in track specific professional studies, 43 hours of general education, and 30 hours of Bible and theology to complete a total of 151 hours. **This terminal program, which is a five-year sequence, is designed for the student who plans to go directly into Christian school teaching.**

After completing this degree program, the student will:

- ◆ Demonstrate the ability to teach the various subjects, including music, in the Christian elementary classroom;
- ◆ Have accomplished a basic level of music proficiency in two introductory non-performance applied concentrations;
- ◆ Have developed a sound scriptural and philosophical basis for music and classroom education in the Christian school;
- ◆ Have developed a professional portfolio.

Students who successfully complete the above program will be eligible to apply for ACSI Christian elementary school music certification K-8. Students may also apply for an elementary endorsement in classroom education.

Students must maintain a grade point average of at least 2.0 for the entire program and a 2.5 in music education courses. Before students enroll in Supervised Student Teaching (Mu 498 or TE 450), they must meet all the requirements listed under the heading “Supervised Teaching in Music Ed” found on page 87.

Students who complete this bachelor of arts program will graduate with the white tassel, which represents the arts.

The following are the specific course requirements for the *Bachelor of Arts Degree in Christian School Music Education: K-8 Music and Classroom Education – Non-performance Track*.

Professional Studies: Track Specific

Mu 141 Introductory Instrument I ¹ 1
Mu 142 Introductory Instrument I 1
Mu 241 Introductory Instrument I 1
Mu 242 Introductory Instrument I 1
Mu 141 Introductory Instrument II ¹ 1
Mu 142 Introductory Instrument II 1
Mu 241 Introductory Instrument II 1
Mu 242 Introductory Instrument II 1
Mu 268 Intro to Music Education 2
TE 112 Principles/Methods of Education 2
TE 213 Science Methods 2
TE 214 Social Studies Methods 2
TE 215 Reading Methods 2
TE 216 Math Methods 2
TE 217 Language Arts Methods 2
TE 450 Student Teaching (Classroom) ² 4
Mu 498 Student Teaching (Music, K-8) ² 4
	Track Total 30

Bible & Theology 30
General Education 43
Professional Core 48
Track Specific 30
Total Program Hours 151

¹ One of the applied concentrations must be in piano unless the student has passed the piano proficiency test.

² See the Supervised Student Teaching in Music requirements on page 87.

Supervised Student Teaching in Music Ed

As mentioned previously, all three Music Education tracks require taking Supervised Student Teaching (Mu 498) and the K-8 – Music Ed and Classroom Ed Track also requires CTE 450. This student teaching, under the guidance of the Division of Christian Teacher Education, a music supervisor, and a cooperating teacher, is the climax of this program.

To be eligible for a student teaching assignment, the candidate must do the following:

- ◆ Successfully complete all academic courses except courses designated above as taken during the first half of the student teaching semester;
- ◆ Remove all unsatisfactory grades from his/her record (“D” in Music Ed courses, or any “F”s or “T”s);
- ◆ Be in good standing, free from academic, disciplinary, and musical probation (see *A Guide for Music Majors*);
- ◆ Achieve and maintain the following grade point averages:
 - 2.5 in Music Ed courses
 - 2.0 overall GPA;
- ◆ Present to the Division of Christian Teacher Education at least three letters from different God’s Bible School and College music faculty that demonstrate that the student has exhibited the musical and social qualities necessary to succeed as a Christian school music teacher; and
- ◆ Complete the three phases of student teacher candidate screening by the Student Teacher Committee successfully.



Associate of Arts Degree Major in Music Ministry

The Division of Music offers the degree Associate of Arts Degree with a major in Music Ministry.

The program listed below leads to an associate of arts degree, which shall be granted upon completion of 18 hours of Bible and theology, 20 hours of general education, and 24 hours of professional studies in music to complete a total of 66 hours.

After completing this degree program, the student will:

- ◆ Have accomplished an introductory level of proficiency in two introductory applied concentrations;
- ◆ Have developed a sound scriptural and philosophical basis for music in the church;
- ◆ Have developed a professional portfolio.



Students must maintain a grade point average of at least 2.0 for the entire program. Students who complete this associate of arts program will graduate with the white tassel, which represents the arts.

The following are the specific course requirements for the *Associate of Arts Degree with a Major in Music Ministry*.

Bible and Theology

Bi 103 OT Literature 3
Bi 104 NT Literature 2
Bi 131 Music of the Bible 3
Th 112 Doct/Practice of Evangelism 1
Th 113 Doct/Practice Church Growth 1
Th 114 Doct/Practice of World Missions 1
Th 115 Doct/Practice of Prayer 1
Th 201 Christian Beliefs 3
Th 202 Doctrine of Holiness 3
	Christian Service Credits (3) 0
Total	 18

General Education

En 101 English Composition I 3
En 102 English Composition II 3
En 201 Public Speaking 3
Ma/Sc Math or Science Electives 3
Mu 101 Fine Arts Appreciation 2
Ph 221 Introduction to Philosophy 3
Ps 101 General Psychology 3
Total	 20

Professional Studies

Mu 101 Intro Music Fundamentals ¹ 2
Mu 102 Basic Music Theory ¹ 3
Mu 111 Music Theory I ² 3
Mu 112 Music Theory II 3
Mu 133 Intro to Philosophy of Music 2
Mu 141 Introductory Instrument I ³ 1
Mu 142 Introductory Instrument I 1
Mu 241 Introductory Instrument I 1
Mu 242 Introductory Instrument I 1
Mu 170 MSO Rec/Lec Attend (4 sems) 0
Mu 268 Intro to Music Education ⁴ 2
Mu 385 Conducting Techniques I ⁴ 2
Mu Church Music Elective 2
Mu Music Org Sequence (2 sems) 1
Total	 24

Total Program Hours..... 62

- ¹ Mu 101 and 102 are deficiency courses which must be taken by all students who do not successfully pass the theory entrance examinations. Credit may be granted by passing the matriculation tests. Students who test out of Mu 101 and/or Mu 102 will select 2-5 hours of academic music electives.
- ² Students must pass the Introduction to Music Fundamentals and the Basic Music Theory Matriculation tests to enter Mu 111.
- ³ Students who enter at a higher level will complete a four semester spiral sequence in that applied instrument. One of the applied concentrations must be in piano unless the student has passed the piano proficiency test.
- ⁴ Observation required in this course.

Teacher Education Programs

Division Mission Statement

The Teacher Education Division of God's Bible School and College provides the curriculum, faculty support, and practicum experience necessary to prepare students to fill teaching positions in the Christian school.

Bachelor of Arts Major in Teacher Education

The Bachelor of Arts Degree with a Major in Teacher Education has two tracks: Elementary Education and Secondary English Education. The program consists of three components: teacher education, general education, and Bible and theology. The four-year program does not require a minor. Although this is a terminal program preparing the student to enter Christian school ministry, many graduates transfer to other institutions and pursue graduate work.

Upon completion of the course requirements in the Division of Christian Teacher Education, the student should be able to:

- ◆ Demonstrate an understanding of the Bible and a personal relationship with Jesus Christ in order to give spiritual leadership to his/her students;
- ◆ Give evidence of a broad knowledge of general education subjects which will provide a foundation for his/her teaching;
- ◆ Exhibit a thorough understanding of the content, methods, teaching aids, and assessment instruments used in specific subject areas; and
- ◆ Demonstrate a knowledge of practical methods by means of student teaching and field experience.

The following are the specific course requirements for the *Bachelor of Arts with a Major in Teacher Education* for both tracks:

Bible and Theology: Both Tracks

Bi 103 OT Literature	3
Bi 104 NT Literature	2
Th 112 Doct/Practice Evangelism	1
Th 113 Doct/Practice Church Growth	1
Th 114 Doct/Practice World Missions	1
Th 115 Doct/Practice of Prayer	1
Th 140 Principles Christian Life I	2
Th 141 Principles Christian Life II	2
Th 201 Christian Beliefs	3
Th 202 Doctrine of Holiness	3
Bi/Th Bible or Theology Electives	9
Th 411 Senior Worldview Seminar	2
	Christian Service Credits (7)	0
Total	30

General Education Core: Both Tracks

Bu 115 Computer Applications I	1
Bu 116 Computer Applications II	1
Bu 117 Computer Applications III	1
En 101 English Composition I	3
En 102 English Composition II	3
En 201 Public Speaking	3
En Literature Electives	3
Ma Math Electives	3
Mu 101 Fine Arts Appreciation	2
Mu Music Electives	2
Ph 221 Introduction to Philosophy	3
Ps 101 General Psychology	3
SS 121 Western Civilization	3
SS Social Science Electives	3
SS Diversity Electives	2
Sc Science Electives	4
	General Education Electives	3
Total General Ed Core	43

Professional Studies: Both Tracks

TE 001 CTE Organization* 0
 TE 101 Philosophy Christian School Ed 2
 TE 111 Portfolio Development 1
 TE 112 Principles/Methods of Ed 2
 TE 234 Ed Methods, Media & Materials 2
 TE 328 Classroom Assessment 2
 TE 332 Classroom Observation 2
 TE 334 ACE Methods 2
 TE 435 Classroom Management 2
 TE 437 Ed Exceptional Learners 2
 TE 440 Student Teaching Practicum I 2
 TE 441 Student Teaching Practicum II 3
 TE 450 Student Teaching 9
Total 31

Total Common Hours 104

* CTE Organization attendance is required each semester a student is enrolled in the program.



Elementary Ed Track

General Education:

Elementary Specifics

En 315 Children's Literature 3
 Mu 268 Intro to Music Education 2
 Ps 232 Child Development 3
 Ps 326 Educational Psychology 3
Track General Ed Core 11

Professional Studies:

Elementary Specifics

CM 203 Teaching Doctrine in Child Ministry 3
 TE 125 Bible Methods 2
 TE 213 Art Methods 2
 TE 214 Science Methods 2
 TE 215 Social Studies Methods 2
 TE 216 Reading Methods 2
 TE 217 Math Methods 2
 TE 323 Language Arts Methods 2
 TE 441 Health/PE Methods 2
Total 19

Core Common Hours 104

Bible & Theology Core 30
 General Education Core 43
 Professional Core 31

Elementary Track Specifics 30

General Ed Track Specifics 11
 Professional Track Specifics 19

Total Program Hours 134

Secondary English Education Track

General Education:

Secondary English Education Specifics

En 121 Intro to Literature 3
 En 221 British Literature 3
 En 222 American Literature 3
 En 321 Advanced Composition 3
 En 323 Modern English Grammar 3
 En 333 World Literature 3
 En 325 Adolescent Literature 2
 En 421 Shakespeare 3
 Mu 113 Intro to Philosophy of Music 2
 Ps 224 Adolescent Psychology 2
 Ps 326 Educational Psychology 3
Track General Ed Core 30



Professional Studies:

Secondary English Education Specifics

TE 360	Teaching Lang Arts Sec Schools	2
TE 370	Teaching Lit in Sec Schools	2
Total	4

Core Common Hours 104

Bible & Theology Core	30
General Education Core	43
Professional Core	31

Secondary English Track Specifics 34

General Ed Track Specifics	30
Professional Track Specifics	4

Total Program Hours *138

*Some of the specific courses required here may be taken as electives within the general education core, thereby reducing the total number of hours required.

Bible requirements must include at least three hours of 300-level classes or above and at least six hours of Old Testament classes.

Supervised Student Teaching

The program culminates in a student teaching assignment for those who qualify under the supervision of the Division of Teacher Education, a supervisor from the college, and a cooperating teacher. To be eligible for a student teaching assignment, the student must do the following:

- ◆ Remove all unsatisfactory grades from courses required for program completion (“F”s and “I”s or “D”s in CTE courses);
- ◆ Be in good standing, free from academic and disciplinary probation;
- ◆ Achieve and maintain the following grade point averages:
 - ◆ 2.5 in professional studies
 - ◆ 2.0 overall grade point average;
- ◆ Secure, in writing, recommendations from at least three college faculty members in Christian teacher education, indicating that he or she demonstrates the academic and social qualities necessary to succeed as a Christian school teacher; and
- ◆ Successfully complete the three phases of student teacher candidate screening by the Student Teaching Committee.

This program is not designed to prepare students to teach in a secular school or prepare them for state certification in elementary education. However, students who complete the program will be eligible to apply to the Association of Christian Schools International for certification in their teaching areas and may also apply for a State of Ohio Non-Tax Teaching Certificate.

*Associate of Arts
Major in Elementary
Teacher Education*

The Associate of Arts Degree with a Major in Teacher Education has one track: Elementary Education. The program consists of three components: Bible and theology, general education, and professional studies. The two-year program does not require a minor. Although this is a terminal program preparing the student to

assist in Christian school ministry, some graduates may wish to continue their education by pursuing a bachelor's degree in Christian elementary education.

Upon completion of course requirements in the Division of Christian Teacher Education, the student should be able to do the following:

- ◆ Demonstrate an understanding of the Bible and a personal relationship with Jesus Christ in order to give spiritual leadership to his/her students;
- ◆ Give evidence of a broad knowledge of general education subjects which will provide a foundation for his/her teaching; and
- ◆ Exhibit an understanding of the content, methods, teaching aids, and evaluation instruments used in various subject areas.

The following are the specific course requirements for the *Associate of Arts with a Major in Elementary Teacher Education*.

Bible and Theology

Bi 103 OT Literature	3
Bi 104 NT Literature	2
Th 112 Doct/Practice of Evangelism	1
Th 113 Doct/Practice Church Growth	1
Th 114 Doct/Practice World Missions	1
Th 115 Doct/Practice of Prayer	1
Th 201 Christian Beliefs	3
Th 202 Doctrine of Holiness	3
	Christian Service Credits (3)	0
Total	15



General Education

En 101 English Composition I	3
En 102 English Composition II	3
En 201 Public Speaking	3
Ma/Sc Math or Science Electives	3
Mu 268 Intro to Music Education	2
Mu 101 Fine Arts Appreciation	2
Ph 221 Introduction to Philosophy	3
Ps 101 General Psychology	3
	General Education Electives	5
Total	27

Professional Studies

TE 001 CTE Organization	*0
TE 101 Philosophy Christian School Ed	2
TE 111 Portfolio Development	1
TE 112 Principles/Methods of Ed	2
TE 121 Bible Methods	2
TE 125 Art Methods	2
TE 215 Reading Methods	2
TE 234 Ed Methods, Media & Materials	2
TE 323 Health/PE Methods	2
TE 332 Classroom Observation	2
TE 334 ACE Methods	2
TE 340 Educational Field Experience	3
TE 437 Educating Exceptional Learners	2
TE 435 Classroom Management	2
Total	26

Total Program Hours **68**

* CTE Organization attendance is required each semester a student is enrolled in the program.

The program culminates in a Field Experience where the student will not only observe the dynamics within the classroom, but also participate by assisting the teacher. To be eligible for this assignment, the student must do the following:

- ◆ Remove all unsatisfactory grades from courses required for program completion (“F”s and “I”s or “D”s in CTE courses);
- ◆ Be in good standing, free from academic and disciplinary probation;
- ◆ Achieve and maintain the following grade point averages:
 - ◆ 2.5 in professional studies
 - ◆ 2.0 overall grade point average;
 - and
- ◆ Secure, in writing, recommendations from at least three college faculty members in Christian teacher education, indicating that he or she demonstrates the academic and social qualities necessary to succeed as an aide in a Christian school.



General Studies Programs

Division Mission Statement

The General Studies Division of God’s Bible School and College provides students with a Christ-centered education in selected concentrations, thereby supporting students in their development of a Christian worldview and their preparation for lives of ministry and vocational success.

Bachelor of Arts Major in Church and Family Ministry

The program listed below leads to a bachelor of arts degree which shall be granted upon completion of 51 hours of professional studies, 45 hours of general education, and 30 hours of Bible and theology for a total of 126 hours. This four-year degree program includes two professional-studies cognates consisting of 18 hours each. This terminal program prepares the student to function in a variety of ministry capacities in local churches and within his/her own family.

After completing a Bachelor of Arts with a Major in Church and Family Ministry degree, the student should, depending on the cognates chosen, be able to:

- ◆ Function as trained support personnel in the local church;
- ◆ Transmit faith to the next generation through their churches and families; and
- ◆ Apply a Christian worldview to daily living.

Additional objectives, specific to selected cognates, are listed below with each cognate.

The following are the specific course requirements for the *Bachelor of Arts with a Major in Church and Family Ministry*.

Bible and Theology

Bi 103 OT Literature	3
Bi 104 NT Literature	2
Bi 131 Music of the Bible	3
Bi 222 Wisdom Literature	3
Bi/Th Bible or Theology Electives	3
Th 112 Doct/Practice of Evangelism	1
Th 113 Doct/Practice Church Growth	1
Th 114 Doct/Practice World Missions	1
Th 115 Doct/Practice of Prayer	1
Th 140 Principles of Christian Life I	2
Th 141 Principles of Christian Life II	2
Th 201 Christian Beliefs	3
Th 202 Doctrine of Holiness	3
Th 411 Senior Worldview Seminar	2
	Christian Service (7)	0
Total	30

General Education

Bu 115 Computer Applications I	1
Bu 116 Computer Applications II	1
Bu 117 Computer Applications III	1
En 101 English Composition I	3
En 102 English Composition II	3
En 201 Public Speaking	3
En Literature Electives	3
Ma Math Electives	3
Mu 101 Fine Arts Appreciation	2
Mu Music Electives	2
Ph 221 Intro to Philosophy	3
Ps 101 General Psychology	3
Sc Science Electives	4
SS 121 Western Civilization	3
SS Social Science Electives	3
SS Diversity Electives	2
	General Education Electives	5
Total	45

Professional Studies

CM 121 Intro to Church Education	3
CM 202 Child Evangelism Workshop	3
Le 100 Gen Studies Leadership Symposium *	0
Le 121 Intro to Church/Family Leadership	2
Ps 204 Introduction to Counseling	3
Ps 232 Child Development	3
SS 231 Marriage and Family Living	3
PF 201 Sophomore Portfolio Evaluation	0
PF 301 Junior Portfolio Evaluation	0
PF 401 Senior Portfolio Evaluation	0
	Cognate I**	18
	Cognate II**	18
Total	53

Total Program Hours **128**

* General Studies Leadership Symposium is required each semester a student is enrolled in the program.

** Students may select any two of the following cognates. If General Business or Office Administration is chosen, the student is not required to take Bu 115 and Bu 116, as these topics are covered more thoroughly in the Business cognates. Also note that if there is overlap in cognate requirements, the student must take elective hours to reach the 128 total program hours. If the student wishes to create or transfer a cognate, he/she may petition the division faculty to create/transfer the desired cognate.



Apologetics

Upon completion of the Apologetics cognate, the student should be able to:

- ♦ Explain the differences between Christianity and other major belief systems; and
- ♦ Use evidences for Christianity to share his/her faith more effectively.

Ph 225 Apologetics	3
Ph 235 Creation Apologetics	3
Ph 302 Christian Ethics	2
Ph 325 Logic, Argument and Debate	2
Ph 335 Evangelistic Apologetics	2
Ph 431 Readings in Archaeology	1
SS 204 Religions of America	2
SS 327 World Religions	3
Total Cognate Hours		18

Children's Ministry

Upon completion of the Children's Ministry cognate, the student should be able to:

- ♦ Demonstrate ability to organize and administer a theologically sound children's ministry program; and
- ♦ Exhibit effective presentation skills.

CM 102 Introduction to Story Telling	3
CM122 Church Ed of Children	3
CM 203 Teaching Doctrine Child Min	3
CM 204 Creative Bible Teaching	3
CM 302 Adv Child Evan Workshop	3
ME 106 Church Educational Program	1
<i>Choose one of the following:</i>		
Mu 381 Ele Music Methods	2
Mu 383 Jr High Music Methods	1
Total Cognate Hours		17-18

Church Leadership

Upon completion of the Church Leadership cognate, the student should be able to:



- ♦ Exhibit an understanding of spiritual disciplines and personal godliness; and
- ♦ Demonstrate ability to provide lay leadership within the local church.

Bi 428 Prison Epistles	2
Bi 330 Daniel and Revelation	2
ME 105 Spiritual Formation	1
ME 106 Church Education Program	1
ME 406 Leadership & Meeting Management	1
Ph 204 Religions of America	2
Ps Counseling Electives	3
SS 432 History/Lit Am Holiness Movement	2
Th 212 Discipleship & Small Groups	2
Th 301 Holiness: Critical Issues	2
Total Cognate Hours		18

Christian Counseling

Upon completion of the Christian Counseling cognate, the student should be able to:

- ♦ Articulate a sound scriptural and psychological approach to lay counseling; and
- ♦ Demonstrate skill in interpersonal, nonprofessional counseling.

Ma 122 Statistics	3
Ph 302 Christian Ethics	3
Ps 224 Adolescent Psychology	2
Ps 325 Basic Counseling Skills	3
Ps 336 Problems in Counseling	3
Ps 412 Marriage/Family Counseling	2
Ps 431 Crisis Counseling	1
Ps 436 Premarital Counseling	1
Total Cognate Hours		18



Family/Home Studies

Upon completion of the Family and Home Studies cognate, the student should be able to:

- ♦ Manage activities and resources in the home to meet needs of family members; and
- ♦ Exhibit a working knowledge of biblical concepts concerning the family.

FH 101	Food and Nutrition	3
FH 201	Meal Management	3
FH 202	Entertaining Foods	3
FH 431	Personal Finance	3
FH 432	Home Management	3
FH	Family/Home Studies Electives	3
Total Cognate Hours		18

Intercultural Studies & World Missions

Upon completion of the Intercultural Studies and World Missions cognate, the student should be able to:

- ♦ Articulate a scriptural philosophy of Christian missions; and
- ♦ Demonstrate an ability to articulate the gospel effectively in a cross-cultural setting.

Mi 102	History/Lit World Missions	3
Mi 227	Theology Christian World Missions	2
Mi 328	Principles/Prob Mission Life	3
Mi 432	Missions Internship	1
Mi	Approved Electives	9
Total Cognate Hours		18

Music

Upon completion of the Music cognate, the student should be able to:

- ♦ Exhibit a working knowledge of biblical concepts concerning music; and
- ♦ Demonstrate an understanding of fundamental music concepts.

Mu 101	Intro to Music Fundamentals	2
Mu 102	Basic Music Theory	3
Mu 133	Intro Philosophy of Music	2
Mu 231	Hymnology	2
Mu 381	Elementary Music Methods	2
Mu 385	Conducting Techniques I	2
Mu	Music Electives	3
Mu	Applied Instrument Electives	2
Total Cognate Hours		18

Office Administration

Upon completion of the Office Administration cognate, the student should be able to:

- ♦ Demonstrate computer and office-technology skills; and
- ♦ Exhibit the necessary skills to serve effectively as an office administrator in a church or secular setting.

Bu 122	Business Communications	2
Bu 132	Business Practices and Ethics	2
Bu 152	Database Management	2
Bu 162	Spreadsheet Applications	2
Bu 213	Records Management	3
Bu 223	Office Procedures	3
Bu 232	Transcription	2
Bu 243	Document Processing	2
Total Cognate Hours		18

General Business

Upon completion of the General Business cognate, the student should be able to:

- ◆ Demonstrate ability to analyze and solve administrative problems in the business world; and
- ◆ Exhibit understanding of the roles of accounting, economics, finance management, and marketing activities.

Bu 132..... Business Practices and Ethics	2
Bu 152..... Database Management.....	2
Bu 162..... Spreadsheet Applications	2
Bu 173..... Accounting I.....	3
<i>Choose three of the following:</i>	
Bu 253..... Fundamentals Manage/Super.....	3
Bu 263..... Fundamentals of Marketing.....	3
Bu 273..... Legal Environment of Business.....	3
SS 213..... Intro to Economics	3
Total Cognate Hours	18

Business

Associate of Arts Major in Business

The program listed below leads to an associate of arts degree that shall be granted upon the completion of 33 hours of professional studies, 20 hours of general education and 15 hours of Bible and theology for a total of 68 hours.

The Business program has a number of highly qualified professionals who teach courses such as Legal Environment of Business, as well as application classes such as Spreadsheet Management. Because these individuals are adjunct faculty, such courses are generally offered only in the evening. Students enrolling in the Business program should expect, consequently, to have evening classes once or twice per week.

Upon completing an Associate of Arts with a Major in Business, the student should be able to:

- ◆ Communicate clearly through written and oral communications;
- ◆ Process documents, manage file systems, and handle the flow of office correspondence properly; and
- ◆ Utilize each application of Microsoft Office (Word, Access, Excel, PowerPoint) effectively.

The following are the specific course requirements for the *Associate of Arts with a Major in Business*.

Bible and Theology

Bi 103..... OT Literature	3
Bi 104..... NT Literature	2
Th 112..... Doct/Practice of Evangelism	1
Th 113..... Doct/Practice Church Growth.....	1
Th 114..... Doct/Practice World Missions	1
Th 115..... Doct/Practice of Prayer.....	1
Th 201..... Christian Beliefs	3
Th 202..... Doctrine of Holiness	3
Christian Service Credits (3)	0
Total	15

General Education

En 101..... English Composition I.....	3
En 102..... English Composition II	3
En 201..... Public Speaking.....	3
Ma..... Math Elective	3
Mu 101..... Fine Arts Appreciation	2
Ph 302..... Intro to Philosophy	3
Ps 101..... General Psychology.....	3
Total	20

Professional Studies

Business Core

Bu 113 Introduction to Business	3
Bu 115 Computer Applications I	1
Bu 117 Computer Applications III	1
Bu 122 Business Communications	2
Bu 132 Business Practices and Ethics	2
Bu 152 Database Management.....	2
Bu 162 Spreadsheet Applications	2
Bu 173 Accounting I	3
Bu 243 Document Processing.....	2
Le 100 Gen Studies Leadership Symposium	*0
SS 213 Intro to Economics	3
Total	21

* General Studies Leadership Symposium is required each semester a student is enrolled in the program.

The business student also selects one of two tracks: General Business Track or Office Administration Track.



General Business Track

In addition to the objectives listed above for the Associate of Arts in Business, students selecting the *General Business Track* should be able to:

- ◆ Analyze and solve human resource and administrative problems; and
- ◆ Explain the role of accounting, economics, finance management, and marketing activities.

General Business Track Specifics

Bu 183 Accounting II	3
Bu 253 Fundamentals Manage/Super.....	3
Bu 263 Fundamentals of Marketing.....	3
Bu 273 Legal Environment of Business	3
Total	12
Total Program Hours	68

Office Administration Track

In addition to the objectives listed above for the Associate of Arts in Business, students selecting the *Office Administration Track* should be able to:

- ◆ Process documents, manage file systems, and handle the flow of office correspondence properly; and
- ◆ Demonstrate ability to serve effectively as an office administrator.

Office Administration Track Specifics

Bu 213 Records Management	3
Bu 223 Office Procedures	3
Bu 232 Transcription	2
Bu 275 Office Practicum	2
Total	10
Total Program Hours	66



Associate of Arts Major in General Studies

This program leads to an associate of arts degree that shall be granted upon the completion of 49 hours of general studies and 15 hours of Bible and theology, for a total of 64 hours. This two-year degree program does not require a minor. This non-terminal program prepares the student for further study.

Upon completion of the *Associate of Arts with a Major in General Studies* degree, the student should exhibit:

- ◆ Exhibit a broad foundational knowledge in general-education areas;
- ◆ Able to transmit the faith to the next generation; and
- ◆ Demonstrate ability to approach knowledge from a Christian worldview.

The following are the specific course requirements for the *Associate of Arts with a Major in General Studies*:

Bible and Theology

Bi 103 OT Literature	3
Bi 104 NT Literature	2
Th 112 Doct/Practice of Evangelism	1
Th 113 Doct/Practice Church Growth	1
Th 114 Doct/Practice World Missions	1
Th 115 Doct/Practice of Prayer	1
Th 201 Christian Beliefs	3
Th 202 Doctrine of Holiness	3
	Christian Service Credits (3)	0
Total	15

General Education

En 101 English Composition I	3
En 102 English Composition II	3
En 201 Public Speaking	3
Le 100 Gen Studies Leadership Symposium	*0
Ma/Sc Math or Science Electives	3
Mu 101 Fine Arts Appreciation	2
Ph 302 Intro to Philosophy	3
Ps 101 General Psychology	3
Total	20

General Studies

Bu 115 Computer Applications I	1
Bu 116 Computer Applications II	1
Bu 117 Computer Applications III	1
FH 231 Marriage & Family Living	3
En Literature Electives	3
Ma Math Electives	3
Sc Science Electives	4
SS History Electives	3
SS Diversity Electives	2
	General Education Electives	8
Total	29

Total Program Hours **64**

* General Studies Leadership Symposium is required each semester a student is enrolled in the program.

